

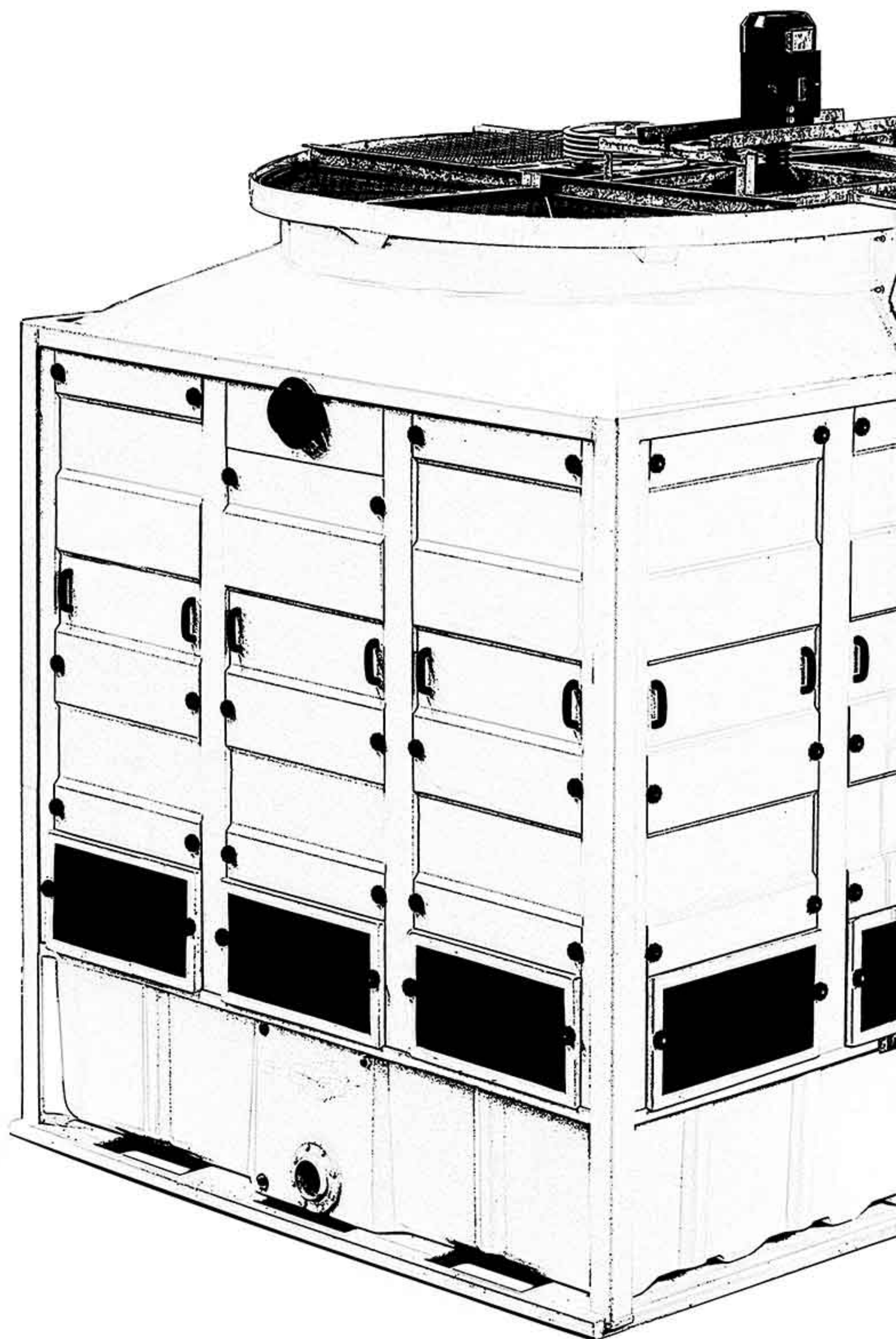


OPEN TYPE MODELS

VCA 10 B - 1665 B

VCC 10 B - 1665 B

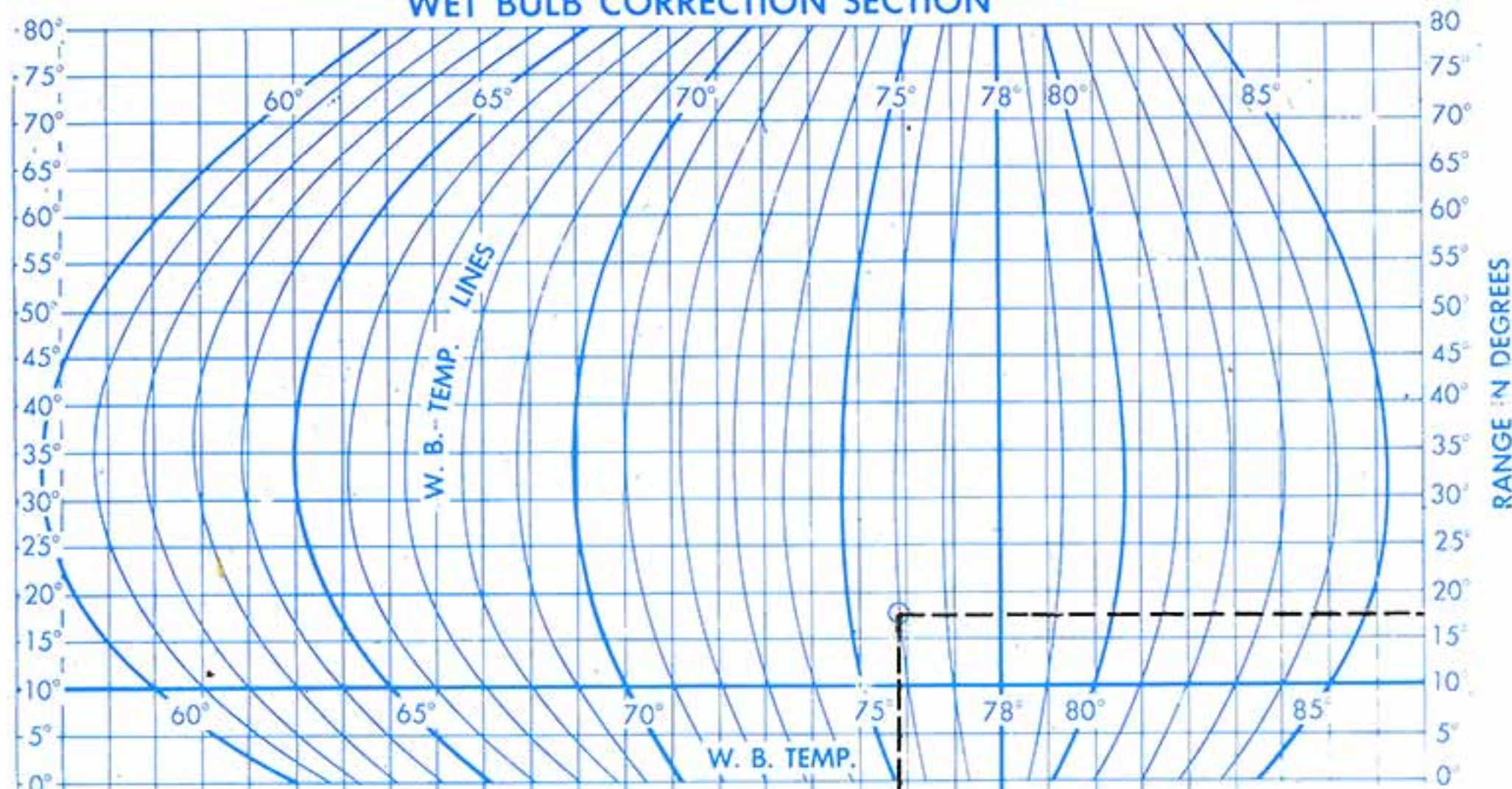
COOLING
TOWERS



VCT-OT-1 JULY 2011

COUNTERFLOW COOLING TOWER SELECTION AND PERFORMANCE CHART

WET BULB CORRECTION SECTION



EXAMPLE:

Given: To cool 2090 GPM from 103°F. to 85°F.
with 76°F. wet bulb.

$$\text{RANGE} = 103^\circ - 85^\circ = 18^\circ$$

$$\text{APPROACH} = 85^\circ - 76^\circ = 9^\circ$$

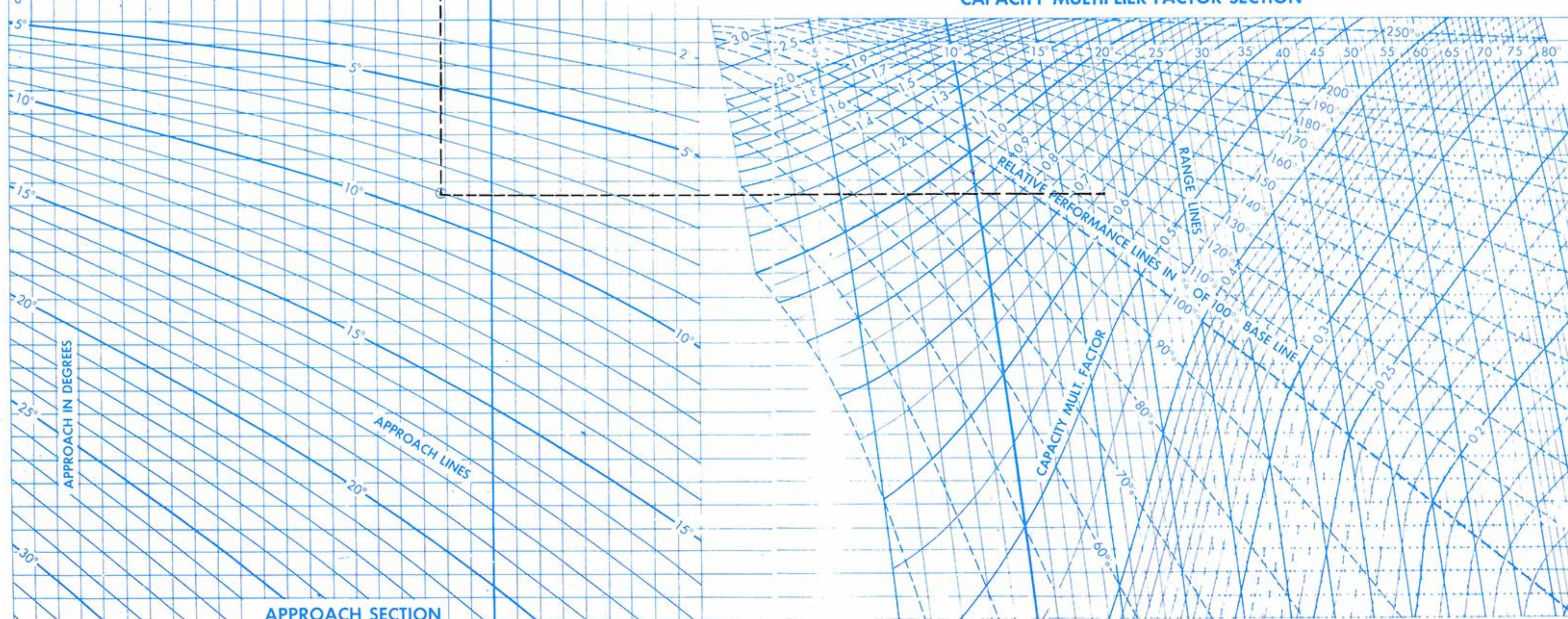
$$\text{LOAD} = \frac{2090 \times 500 \times 18}{15,000} = 1254 \text{ Tons}$$

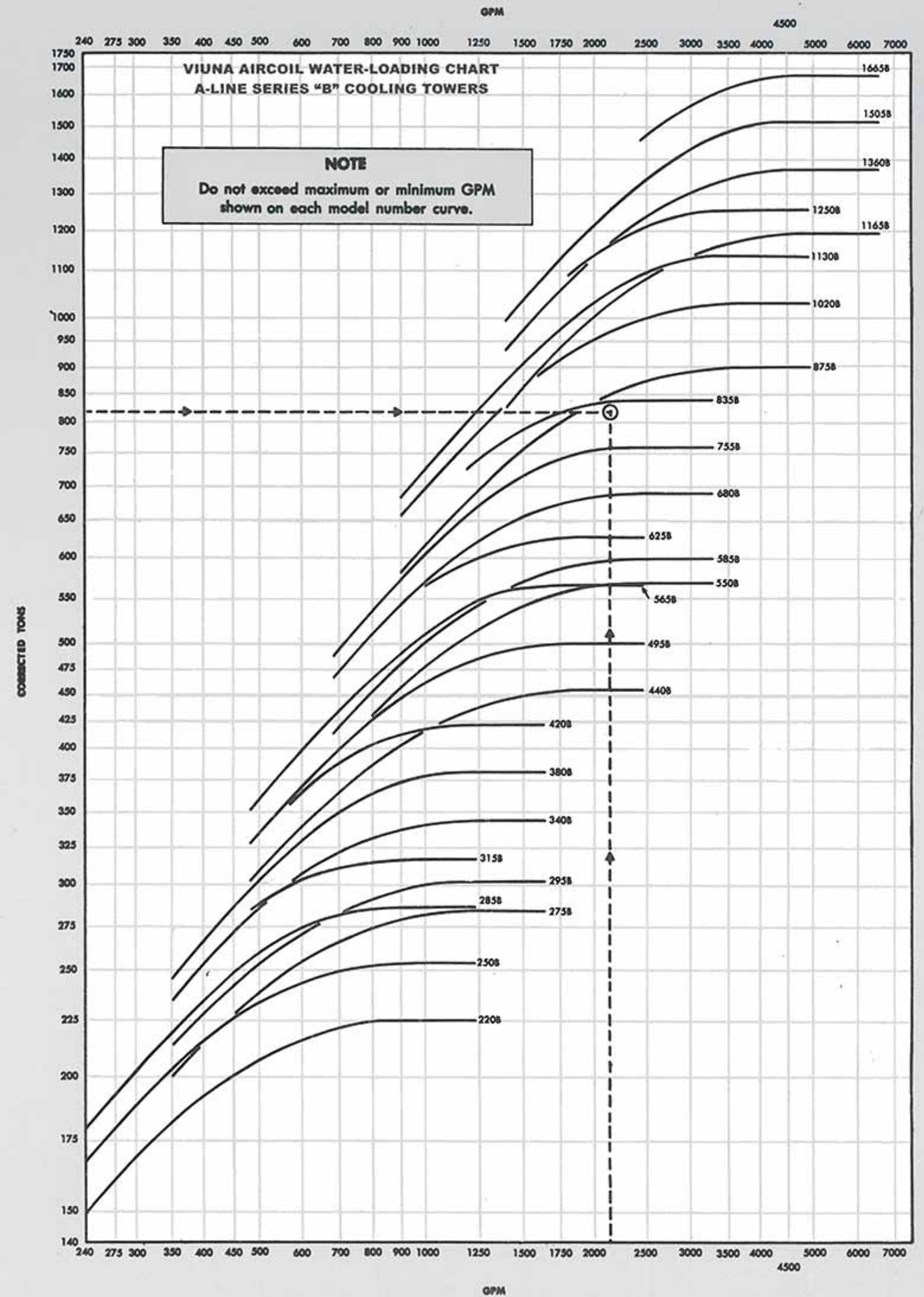
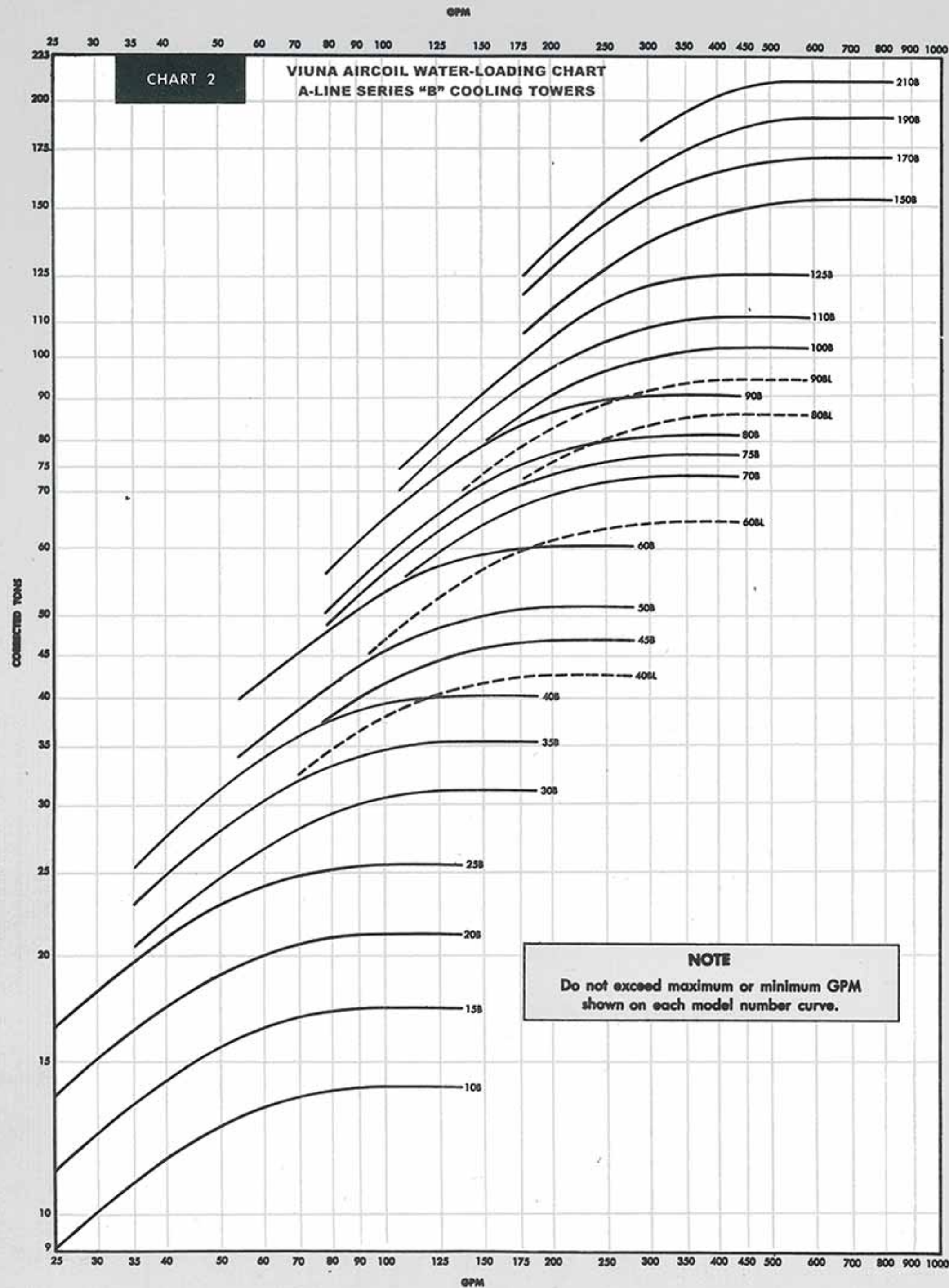
Enter the Wet Bulb Correction Section of Chart 1 on the 18° Range line as shown by the dotted line. From the intersection of the 18° Range line and the 76° Wet Bulb curve, project a straight line into the Approach Section to intersect the 9° Approach curve. From this point, extend a line horizontally into the Capacity Multiplier Factor Section, intersecting the 18° Range line to obtain the correction factor.

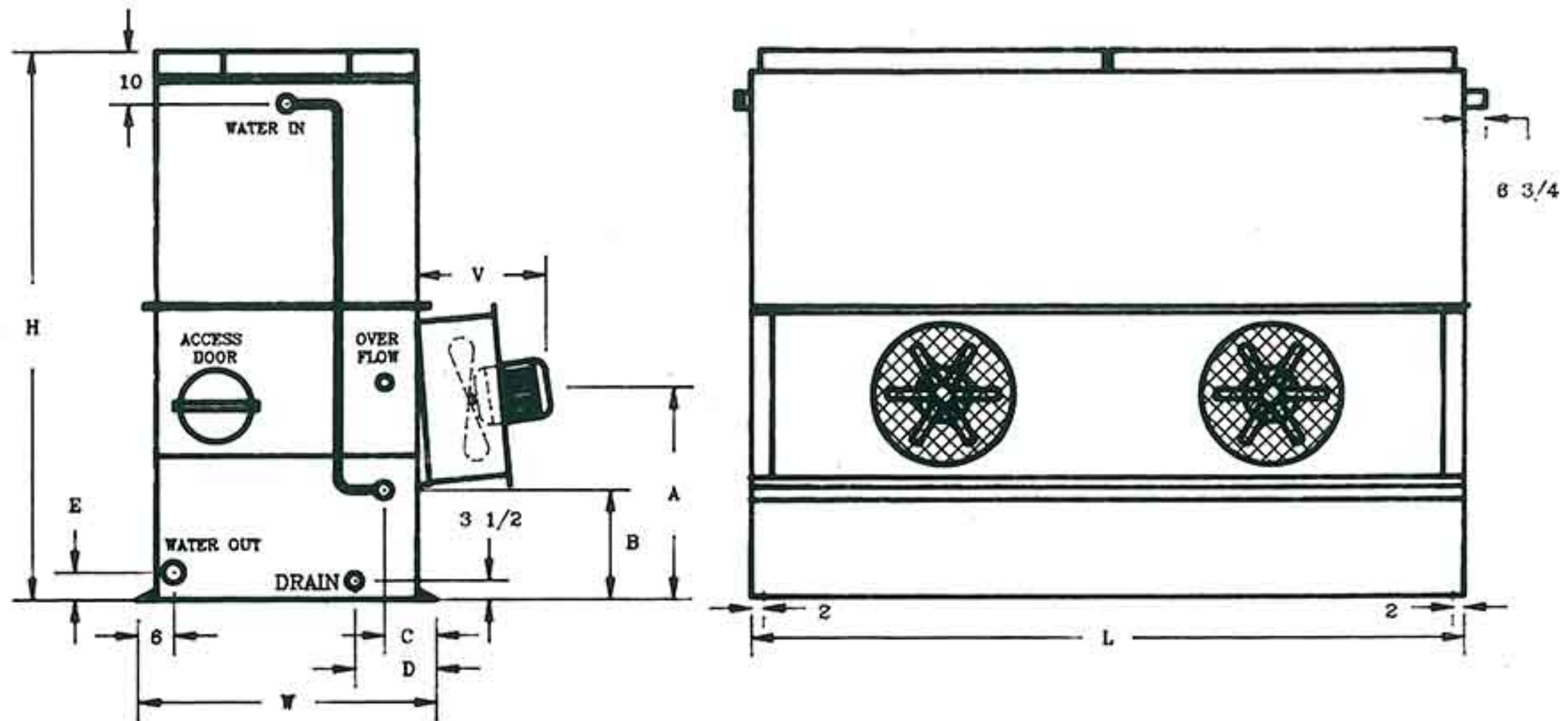
The factor is 0.65. Multiply $0.65 \times 1254 = 815$ corrected tons.

Referring to chart 2, using the GPM and corrected tonnage, either Unit 835B or 875B can be selected. These units are available in either Centrifugal Fan (TMA) or Tubeaxial Fan (TPA).

CAPACITY MULTIPLIER FACTOR SECTION



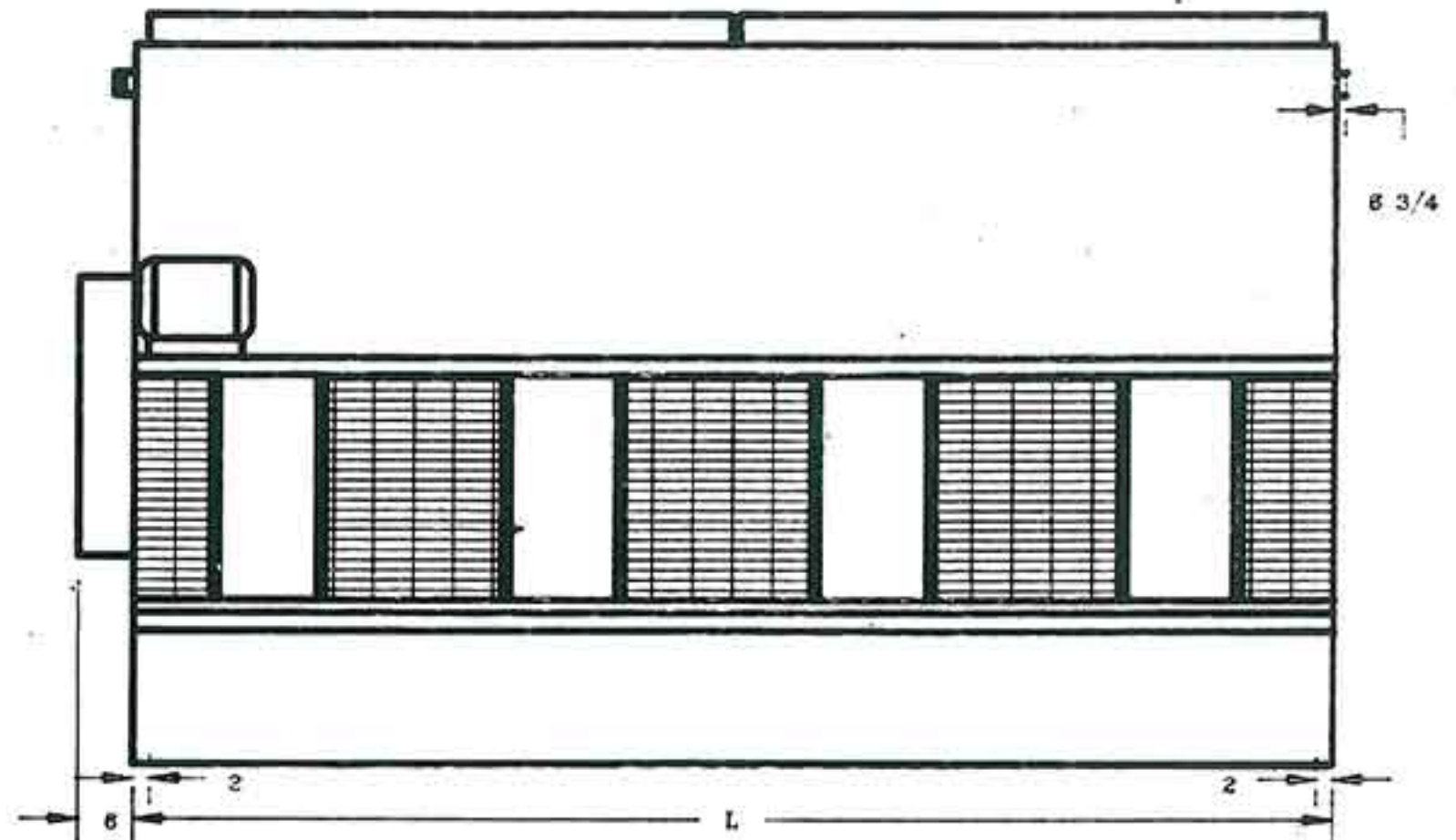
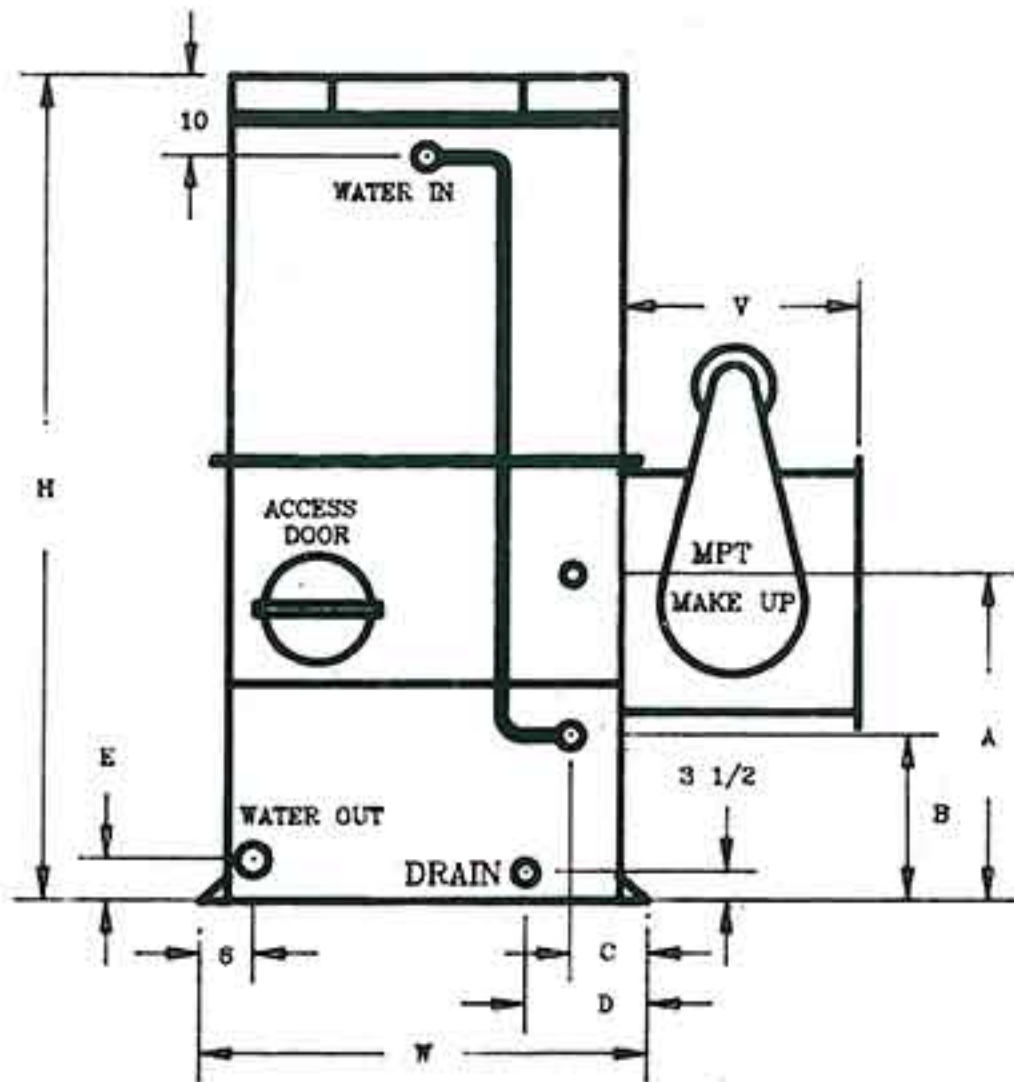




UNIT SIZES (VCA) 10B TO 210B

| MODEL NO | WEIGHTS | | CFM | DIMENSIONS | | | | | | | | | NO OF FAN | MOTOR | | CONNECTION(INCH) | | | | |
|----------|---------|------|-------|------------|----|-----|----|----|----|---|---|---|-----------|----------|------|------------------|-----|---------|-------|-----------|
| | APPROX | | | L | W | H | V | A | B | C | D | E | | 0 ESP HP | RPM | WATER | | MAKE UP | DRAIN | OVER FLOW |
| | SHIPG | OPER | | | | | | | | | | | | | | IN | OUT | | | |
| 10B | 616 | 1116 | 2800 | 35 | 41 | 87 | 18 | 32 | 15 | 4 | 4 | 4 | 1 | 1/2 | 1450 | 3 | 3 | 1 | 2 | 2 |
| 15B | 760 | 1260 | 4200 | 35 | 41 | 87 | 18 | 32 | 15 | 4 | 4 | 4 | 1 | 1/2 | 1450 | 3 | 3 | 1 | 2 | 2 |
| 20B | 800 | 1300 | 4800 | 35 | 41 | 87 | 18 | 32 | 15 | 4 | 4 | 4 | 1 | 1/2 | 1450 | 3 | 3 | 1 | 2 | 2 |
| 25B | 840 | 1340 | 5600 | 35 | 41 | 87 | 18 | 32 | 15 | 4 | 4 | 4 | 1 | 1/2 | 1450 | 3 | 3 | 1 | 2 | 2 |
| 30B | 984 | 1800 | 7000 | 47 | 41 | 87 | 18 | 32 | 15 | 4 | 4 | 4 | 1 | 1 | 910 | 3 | 3 | 1 | 2 | 2 |
| 35B | 1080 | 1900 | 8000 | 47 | 41 | 87 | 18 | 32 | 15 | 4 | 4 | 4 | 1 | 1 | 910 | 3 | 3 | 1 | 2 | 2 |
| 40B | 1260 | 2080 | 8500 | 47 | 41 | 95 | 18 | 32 | 15 | 4 | 4 | 4 | 1 | 1 | 910 | 3 | 3 | 1 | 2 | 2 |
| 40BL | 1360 | 2360 | 10000 | 71 | 41 | 87 | 18 | 32 | 15 | 4 | 4 | 4 | 2 | 2-1/2 | 1450 | 3 | 3 | 1 | 2 | 2 |
| 45B | 1440 | 2440 | 10500 | 71 | 41 | 87 | 18 | 32 | 15 | 4 | 4 | 4 | 2 | 2-1/2 | 1450 | 3 | 3 | 1 | 2 | 2 |
| 50B | 1520 | 2520 | 11500 | 71 | 41 | 87 | 18 | 32 | 15 | 4 | 4 | 4 | 2 | 2-1/2 | 1450 | 3 | 3 | 1 | 2 | 2 |
| 60B | 1760 | 2760 | 12000 | 71 | 41 | 95 | 18 | 32 | 15 | 4 | 4 | 4 | 2 | 2-1/2 | 1450 | 3 | 3 | 1 | 2 | 2 |
| 60BL | 2160 | 3760 | 16700 | 107 | 41 | 87 | 18 | 32 | 15 | 4 | 4 | 4 | 3 | 3-1/2 | 1450 | 4 | 4 | 1 | 2 | 2 |
| 70B | 2320 | 3920 | 17000 | 107 | 41 | 87 | 18 | 32 | 15 | 4 | 4 | 4 | 3 | 3-1/2 | 1450 | 4 | 4 | 1 | 2 | 2 |
| 75B | 2520 | 4120 | 18000 | 107 | 41 | 87 | 18 | 32 | 15 | 4 | 4 | 4 | 3 | 3-1/2 | 1450 | 4 | 4 | 1 | 2 | 2 |
| 80B | 2720 | 4320 | 18500 | 107 | 41 | 95 | 18 | 32 | 15 | 4 | 4 | 4 | 3 | 3-1/2 | 1450 | 4 | 4 | 1 | 2 | 2 |
| 80BL | 2800 | 4900 | 21000 | 143 | 41 | 87 | 18 | 32 | 15 | 4 | 4 | 4 | 4 | 4-1/2 | 1450 | 4 | 4 | 1 | 2 | 2 |
| 90B | 2800 | 4400 | 19500 | 107 | 41 | 95 | 18 | 32 | 15 | 4 | 4 | 4 | 3 | 3-3/4 | 1450 | 4 | 4 | 1 | 2 | 2 |
| 90BL | 2880 | 4980 | 21500 | 143 | 41 | 87 | 18 | 32 | 15 | 4 | 4 | 4 | 4 | 4-1/2 | 1450 | 4 | 4 | 1 | 2 | 2 |
| 100B | 3000 | 5100 | 23000 | 143 | 41 | 87 | 18 | 32 | 15 | 4 | 4 | 4 | 4 | 4-1/2 | 1450 | 4 | 4 | 1 | 2 | 2 |
| 110B | 3520 | 5620 | 23500 | 143 | 41 | 95 | 18 | 32 | 15 | 4 | 4 | 4 | 4 | 4-1/2 | 1450 | 4 | 4 | 1 | 2 | 2 |
| 125B | 4400 | 6500 | 24000 | 143 | 41 | 112 | 18 | 32 | 15 | 4 | 4 | 4 | 4 | 4-1/2 | 1450 | 4 | 4 | 1 | 2 | 2 |
| 150B | 4400 | 5950 | 34000 | 143 | 57 | 106 | 25 | 43 | 17 | 5 | 9 | 6 | 2 | 2-3 | 920 | 6 | 6 | 1 | 3 | 3 |
| 170B | 5440 | 6990 | 36000 | 143 | 57 | 114 | 25 | 43 | 17 | 5 | 9 | 6 | 2 | 2-3 | 920 | 6 | 6 | 1 | 3 | 3 |
| 190B | 6600 | 8150 | 36800 | 143 | 57 | 130 | 25 | 43 | 17 | 5 | 9 | 6 | 2 | 2-3 | 920 | 6 | 6 | 1 | 3 | 3 |
| 210B | 7760 | 9310 | 37500 | 143 | 57 | 152 | 25 | 43 | 17 | 5 | 9 | 6 | 2 | 2-3 | 920 | 6 | 6 | 1 | 3 | 3 |

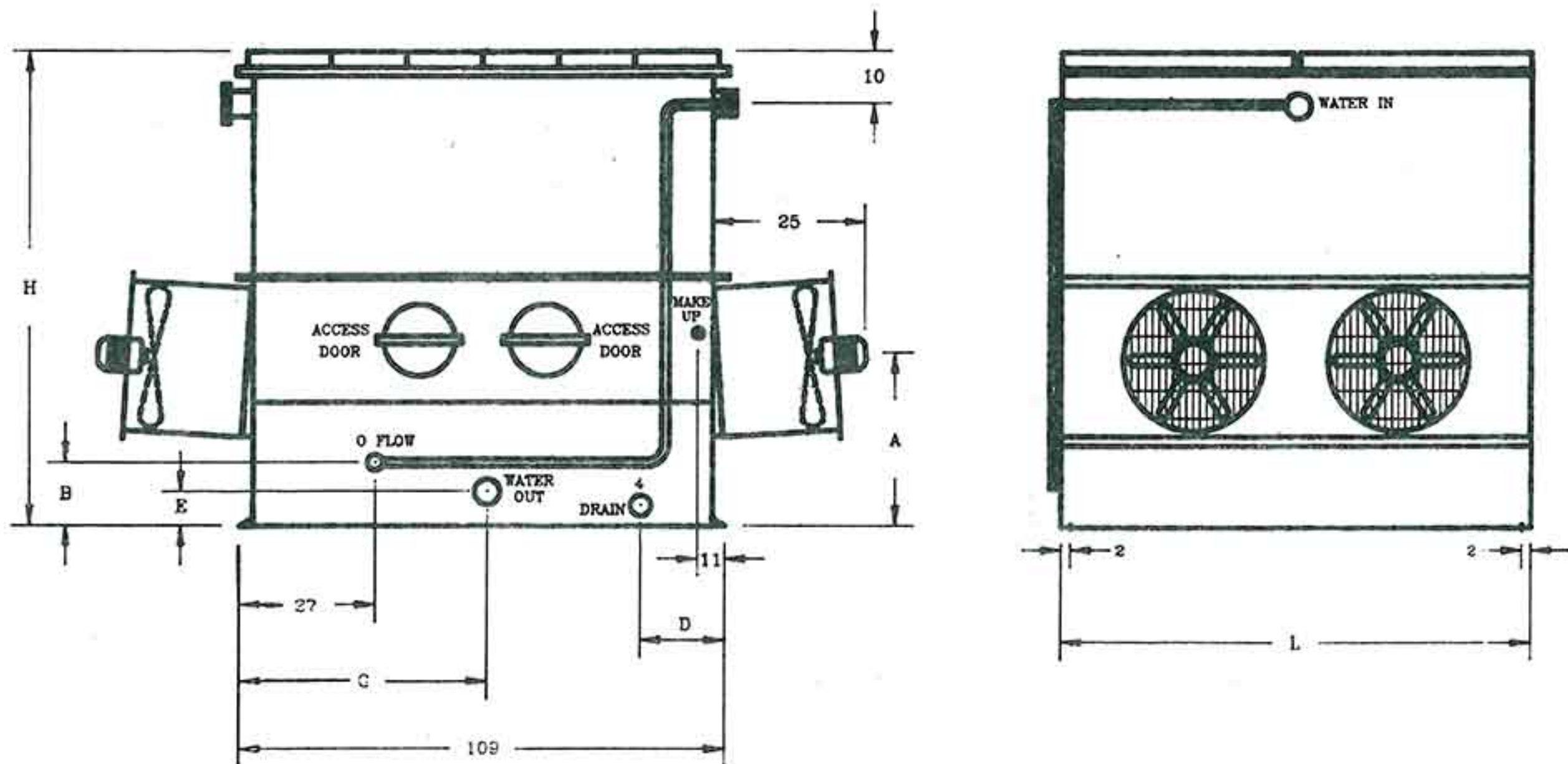
SPRAY PRESSURE
APPROX 5 PSIG
AT INLET HEADER ON ALL UNITS



UNIT SIZES (VCC) 10B TO 210B

| MODEL NO | WEIGHTS | | CFM | DIMENSIONS | | | | | | | | | NO OF FAN | FAN MOTOR HORSEPOWER | | | | | CONNECTION(INCH) | | | | |
|----------|---------|-------|-------|------------|----|-----|----|----|----|---|---|---|-----------|----------------------|----------|----------|----------|----------|------------------|-----|---------|-------|-----------|
| | APPROX | | | L | W | H | V | A | B | C | D | E | | 0 ESP | 1/8" ESP | 1/4" ESP | 3/8" ESP | 1/2" ESP | WATER | | MAKE UP | DRAIN | OVER FLOW |
| | SHIPG | OPER | | | | | | | | | | | | | | | | | IN | OUT | | | |
| 10B | 770 | 1270 | 2800 | 35 | 41 | 81 | 27 | 32 | 15 | 4 | 4 | 4 | 1 | 3/4 | 1 | 1 | 1 | 1 1/2 | 3 | 3 | 1 | 2 | 2 |
| 15B | 950 | 1450 | 4200 | 35 | 41 | 81 | 27 | 32 | 15 | 4 | 4 | 4 | 1 | 1 | 1 1/2 | 1 1/2 | 1 1/2 | 1 1/2 | 3 | 3 | 1 | 2 | 2 |
| 20B | 1000 | 1500 | 4800 | 35 | 41 | 81 | 27 | 32 | 15 | 4 | 4 | 4 | 1 | 1 1/2 | 2 | 2 | 2 | 2 | 3 | 3 | 1 | 2 | 2 |
| 25B | 1050 | 1550 | 5600 | 35 | 41 | 81 | 27 | 32 | 15 | 4 | 4 | 4 | 1 | 3 | 3 | 3 | 3 | 5 | 3 | 3 | 1 | 2 | 2 |
| 30B | 1230 | 2050 | 7000 | 47 | 41 | 81 | 27 | 32 | 15 | 4 | 4 | 4 | 1 | 2 | 3 | 3 | 3 | 3 | 3 | 3 | 1 | 2 | 2 |
| 35B | 1350 | 2170 | 8000 | 47 | 41 | 81 | 27 | 32 | 15 | 4 | 4 | 4 | 1 | 3 | 5 | 5 | 5 | 5 | 3 | 3 | 1 | 2 | 2 |
| 40B | 1575 | 2395 | 8500 | 47 | 41 | 89 | 27 | 32 | 15 | 4 | 4 | 4 | 1 | 5 | 5 | 5 | 7 1/2 | 7 1/2 | 3 | 3 | 1 | 2 | 2 |
| 40BL | 1700 | 2700 | 10000 | 71 | 41 | 81 | 27 | 32 | 15 | 4 | 4 | 4 | 2 | 3 | 5 | 5 | 5 | 5 | 3 | 3 | 1 | 2 | 2 |
| 45B | 1800 | 2800 | 10500 | 71 | 41 | 81 | 27 | 32 | 15 | 4 | 4 | 4 | 2 | 3 | 5 | 5 | 5 | 5 | 3 | 3 | 1 | 2 | 2 |
| 50B | 1900 | 2900 | 11500 | 71 | 41 | 81 | 27 | 32 | 15 | 4 | 4 | 4 | 2 | 5 | 7 1/2 | 7 1/2 | 7 1/2 | 7 1/2 | 3 | 3 | 1 | 2 | 2 |
| 60B | 2200 | 3200 | 12000 | 71 | 41 | 89 | 27 | 32 | 15 | 4 | 4 | 4 | 2 | 5 | 7 1/2 | 7 1/2 | 7 1/2 | 7 1/2 | 3 | 3 | 1 | 2 | 2 |
| 60BL | 2700 | 4300 | 16700 | 107 | 41 | 81 | 27 | 32 | 15 | 4 | 4 | 4 | 3 | 5 | 5 | 7 1/2 | 7 1/2 | 7 1/2 | 4 | 4 | 1 | 2 | 2 |
| 70B | 2900 | 4500 | 17000 | 107 | 41 | 81 | 27 | 32 | 15 | 4 | 4 | 4 | 3 | 5 | 7 1/2 | 7 1/2 | 7 1/2 | 7 1/2 | 4 | 4 | 1 | 2 | 2 |
| 75B | 3150 | 4750 | 18000 | 107 | 41 | 81 | 27 | 32 | 15 | 4 | 4 | 4 | 3 | 7 1/2 | 10 | 10 | 10 | 10 | 4 | 4 | 1 | 2 | 2 |
| 80B | 3400 | 5000 | 18500 | 107 | 41 | 89 | 27 | 32 | 15 | 4 | 4 | 4 | 3 | 7 1/2 | 10 | 10 | 10 | 10 | 4 | 4 | 1 | 2 | 2 |
| 80BL | 3500 | 5600 | 21000 | 143 | 41 | 81 | 27 | 32 | 15 | 4 | 4 | 4 | 4 | 10 1/2 | 7 1/2 | 10 | 15 | 15 | 4 | 4 | 1 | 2 | 2 |
| 90B | 3500 | 5100 | 19500 | 107 | 41 | 89 | 27 | 32 | 15 | 4 | 4 | 4 | 3 | 10 | 10 | 10 | 15 | 15 | 4 | 4 | 1 | 2 | 2 |
| 90BL | 3600 | 5700 | 21500 | 143 | 41 | 81 | 27 | 32 | 15 | 4 | 4 | 4 | 4 | 7 1/2 | 7 1/2 | 10 | 10 | 10 | 4 | 4 | 1 | 2 | 2 |
| 100B | 3750 | 5850 | 23000 | 143 | 41 | 81 | 27 | 32 | 15 | 4 | 4 | 4 | 4 | 10 | 15 | 15 | 15 | 15 | 4 | 4 | 1 | 2 | 2 |
| 110B | 4400 | 6500 | 23500 | 143 | 41 | 89 | 27 | 32 | 15 | 4 | 4 | 4 | 4 | 10 | 15 | 15 | 15 | 15 | 4 | 4 | 1 | 2 | 2 |
| 125B | 5500 | 7600 | 24000 | 143 | 41 | 106 | 27 | 32 | 15 | 4 | 4 | 4 | 4 | 15 | 15 | 20 | 20 | 20 | 4 | 4 | 1 | 2 | 2 |
| 150B | 5500 | 7050 | 34000 | 143 | 57 | 100 | 30 | 43 | 17 | 5 | 9 | 6 | 4 | 15 | 15 | 20 | 20 | 20 | 6 | 6 | 1 | 3 | 3 |
| 170B | 6800 | 8350 | 36000 | 143 | 57 | 108 | 30 | 43 | 17 | 5 | 9 | 6 | 4 | 15 | 20 | 20 | 20 | 20 | 6 | 6 | 1 | 3 | 3 |
| 190B | 8250 | 9800 | 36800 | 143 | 57 | 124 | 30 | 43 | 17 | 5 | 9 | 6 | 4 | 20 | 20 | 25 | 25 | 25 | 6 | 6 | 1 | 3 | 3 |
| 210B | 9700 | 11250 | 37500 | 143 | 57 | 146 | 30 | 43 | 17 | 5 | 9 | 6 | 4 | 20 | 25 | 25 | 25 | 25 | 6 | 6 | 1 | 3 | 3 |

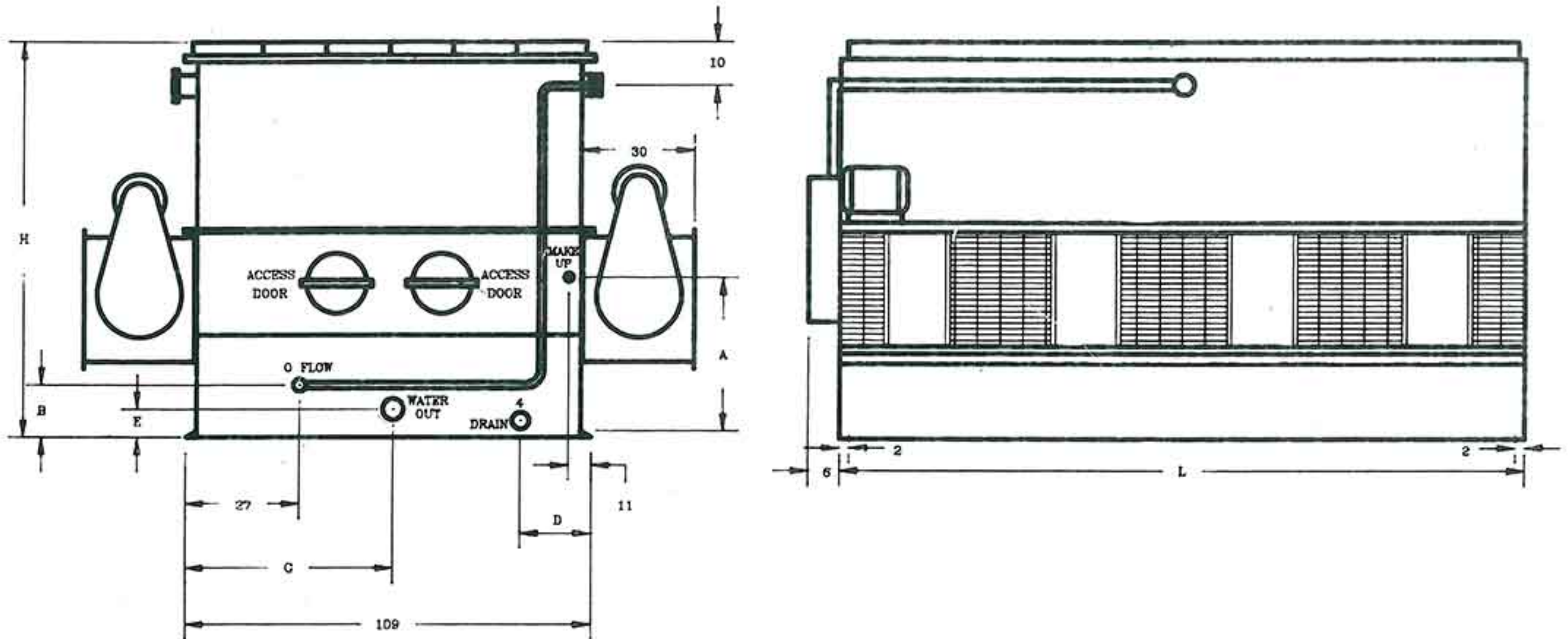
SPRAY PRESSURE
APPROX 5 PSIG
AT INLET HEADER ON ALL UNIT



UNIT SIZES (VCA) 220B TO 1665B

| MODEL NO | WEIGHTS | | CFM | DIMENSIONS | | | | | | | NO OF FAN | FAN MOTOR | | CONNECTION(INCH) | | | |
|----------|---------|-------|--------|------------|-----|----|----|----|---|--------|-----------|-----------|-----|------------------|------|---------|-----------|
| | APPROX | | | L | H | A | B | D | E | G | | 0 ESP HP | RPM | WATER | | MAKE UP | OVER FLOW |
| | SHIPG | OPER | | | | | | | | | | | | IN | OUT | | |
| 220B | 6320 | 9670 | 51000 | 107 | 106 | 43 | 18 | 16 | 7 | 54 1/2 | 4 | 4-2 | 920 | 6 | 6 | 2 | 3 |
| 250B | 8080 | 11430 | 52500 | 107 | 114 | 43 | 18 | 16 | 7 | 54 1/2 | 4 | 4-2 | 920 | 6 | 6 | 2 | 3 |
| 285B | 10080 | 13430 | 55000 | 107 | 131 | 43 | 18 | 16 | 7 | 54 1/2 | 4 | 4-3 | 920 | 6 | 6 | 2 | 3 |
| 315B | 11680 | 15030 | 56000 | 107 | 146 | 43 | 18 | 16 | 7 | 54 1/2 | 4 | 4-3 | 920 | 6 | 6 | 2 | 3 |
| 275B | 7840 | 10940 | 64500 | 143 | 106 | 43 | 18 | 16 | 7 | 54 1/2 | 4 | 4-3 | 920 | 6 | 8 | 2 | 3 |
| 295B | 8160 | 11260 | 68000 | 143 | 106 | 43 | 18 | 16 | 7 | 54 1/2 | 4 | 4-3 | 920 | 6 | 8 | 2 | 3 |
| 340B | 10080 | 13180 | 72000 | 143 | 114 | 43 | 18 | 16 | 7 | 54 1/2 | 4 | 4-4 | 920 | 6 | 8 | 2 | 3 |
| 380B | 12320 | 15420 | 73500 | 143 | 131 | 43 | 18 | 16 | 7 | 54 1/2 | 4 | 4-4 | 920 | 6 | 8 | 2 | 3 |
| 420B | 14240 | 17340 | 75000 | 143 | 146 | 43 | 18 | 16 | 7 | 54 1/2 | 4 | 4-4 | 920 | 6 | 8 | 2 | 3 |
| 440B | 12000 | 17100 | 102000 | 216 | 100 | 43 | 18 | 16 | 7 | 54 1/2 | 8 | 8-2 | 920 | 2-6 | 8 | 2 | 3 |
| 495B | 15520 | 20620 | 105000 | 216 | 108 | 43 | 18 | 16 | 7 | 54 1/2 | 8 | 8-2 | 920 | 2-6 | 8 | 2 | 3 |
| 565B | 19440 | 24540 | 110000 | 216 | 124 | 43 | 18 | 16 | 7 | 54 1/2 | 8 | 8-3 | 920 | 2-6 | 8 | 2 | 3 |
| 625B | 22800 | 27900 | 112000 | 216 | 140 | 43 | 18 | 16 | 7 | 54 1/2 | 8 | 8-3 | 920 | 2-6 | 8 | 2 | 3 |
| 550B | 15280 | 23780 | 129000 | 288 | 110 | 43 | 19 | 16 | 8 | 54 1/2 | 8 | 8-3 | 920 | 2-6 | 10 | 2-2 | 4 |
| 585B | 16000 | 24500 | 136000 | 288 | 110 | 43 | 19 | 16 | 8 | 54 1/2 | 8 | 8-3 | 920 | 2-6 | 10 | 2-2 | 4 |
| 680B | 19760 | 28260 | 144000 | 288 | 118 | 43 | 19 | 16 | 8 | 54 1/2 | 8 | 8-3 | 920 | 2-6 | 10 | 2-2 | 4 |
| 755B | 24240 | 32740 | 147000 | 288 | 135 | 43 | 19 | 16 | 8 | 54 1/2 | 8 | 8-3 | 920 | 2-6 | 10 | 2-2 | 4 |
| 835B | 28160 | 36660 | 150000 | 288 | 150 | 43 | 19 | 16 | 8 | 54 1/2 | 8 | 8-3 | 920 | 2-6 | 10 | 2-2 | 4 |
| 875B | 23680 | 49080 | 204000 | 433 | 110 | 47 | 19 | 16 | 8 | 54 1/2 | 12 | 12-3 | 920 | 3-6 | 10 | 2-2 | 4 |
| 1020B | 29600 | 55000 | 216000 | 433 | 118 | 47 | 19 | 16 | 8 | 54 1/2 | 12 | 12-3 | 920 | 3-6 | 10 | 2-2 | 4 |
| 1130B | 36400 | 61800 | 220500 | 433 | 135 | 47 | 19 | 16 | 8 | 54 1/2 | 12 | 12-3 | 920 | 3-6 | 10 | 2-2 | 4 |
| 1250B | 42320 | 67720 | 225000 | 433 | 150 | 47 | 19 | 16 | 8 | 54 1/2 | 12 | 12-3 | 920 | 3-6 | 10 | 2-2 | 4 |
| 1165B | 32000 | 65800 | 272000 | 577 | 110 | 47 | 19 | 50 | 8 | 11 | 16 | 16-3 | 920 | 4-6 | 2-10 | 2-2 | 4 |
| 1360B | 39520 | 73320 | 288000 | 577 | 118 | 47 | 19 | 50 | 8 | 11 | 16 | 16-3 | 920 | 4-6 | 2-10 | 2-2 | 4 |
| 1505B | 48480 | 82280 | 294000 | 577 | 135 | 47 | 19 | 50 | 8 | 11 | 16 | 16-3 | 920 | 4-6 | 2-10 | 2-2 | 4 |
| 1665B | 56320 | 90120 | 300000 | 577 | 140 | 47 | 19 | 50 | 8 | 11 | 16 | 16-3 | 920 | 4-6 | 2-10 | 2-2 | 4 |

SPRAY PRESSURE
APPROX 5 PSIG
AT INLET HEADER ON ALL UNITS



UNIT SIZES (VCC) 220B TO 1665B

| MODEL NO | WEIGHTS | | CFM | DIMENSIONS | | | | | | | NO OF FAN | FAN MOTOR HORSEPOWER | | | | | CONNECTION(INCH) | | | |
|----------|---------|--------|--------|------------|-----|----|----|----|---|--------|-----------|----------------------|---------|----------|---------|---------|------------------|------|---------|-----------|
| | APPROX | | | L | H | A | B | D | E | G | | 0 ESP | 1/8"ESP | 1/4" ESP | 3/8"ESP | 1/2"ESP | WATER | | MAKE UP | OVER FLOW |
| | SHIPG | OPER | | | | | | | | | | | | | | | IN | OUT | | |
| 220B | 7900 | 11250 | 51000 | 107 | 100 | 43 | 18 | 16 | 7 | 54 1/2 | 6 | 2-10 | 2-15 | 2-15 | 2-15 | 2-15 | 6 | 6 | 2 | 3 |
| 250B | 10100 | 13450 | 52500 | 107 | 108 | 43 | 18 | 16 | 7 | 54 1/2 | 6 | 2-10 | 2-15 | 2-15 | 2-15 | 2-15 | 6 | 6 | 2 | 3 |
| 285B | 12600 | 15950 | 55000 | 107 | 124 | 43 | 18 | 16 | 7 | 54 1/2 | 6 | 2-15 | 2-15 | 2-15 | 2-20 | 2-20 | 6 | 6 | 2 | 3 |
| 315B | 14600 | 17950 | 56000 | 107 | 140 | 43 | 18 | 16 | 7 | 54 1/2 | 6 | 2-15 | 2-15 | 2-20 | 2-20 | 2-20 | 6 | 6 | 2 | 3 |
| 275B | 9800 | 12900 | 64500 | 143 | 100 | 43 | 18 | 16 | 7 | 54 1/2 | 8 | 2-10 | 2-15 | 2-15 | 2-15 | 2-15 | 6 | 8 | 2 | 3 |
| 295B | 10200 | 13300 | 68000 | 143 | 100 | 43 | 18 | 16 | 7 | 54 1/2 | 8 | 2-15 | 2-15 | 2-20 | 2-20 | 2-20 | 6 | 8 | 2 | 3 |
| 340B | 12600 | 15700 | 72000 | 143 | 108 | 43 | 18 | 16 | 7 | 54 1/2 | 8 | 2-15 | 2-20 | 2-20 | 2-20 | 2-20 | 6 | 8 | 2 | 3 |
| 380B | 15400 | 18500 | 73500 | 143 | 124 | 43 | 18 | 16 | 7 | 54 1/2 | 8 | 2-20 | 2-20 | 2-25 | 2-25 | 2-25 | 6 | 8 | 2 | 3 |
| 420B | 17800 | 20900 | 75000 | 143 | 140 | 43 | 18 | 16 | 7 | 54 1/2 | 8 | 2-20 | 2-25 | 2-25 | 2-25 | 2-25 | 6 | 8 | 2 | 3 |
| 440B | 15000 | 20100 | 102000 | 216 | 100 | 43 | 18 | 16 | 7 | 54 1/2 | 12 | 4-10 | 4-15 | 4-15 | 4-15 | 4-15 | 2-6 | 8 | 2 | 3 |
| 495B | 19400 | 24500 | 105000 | 216 | 108 | 43 | 18 | 16 | 7 | 54 1/2 | 12 | 4-10 | 4-15 | 4-15 | 4-15 | 4-15 | 2-6 | 8 | 2 | 3 |
| 585B | 24300 | 29400 | 110000 | 216 | 124 | 43 | 18 | 16 | 7 | 54 1/2 | 12 | 4-15 | 4-15 | 4-15 | 4-20 | 4-20 | 2-6 | 8 | 2 | 3 |
| 625B | 28500 | 33600 | 112000 | 216 | 140 | 43 | 18 | 16 | 7 | 54 1/2 | 12 | 4-15 | 4-15 | 4-20 | 4-20 | 4-20 | 2-6 | 8 | 2 | 3 |
| 550B | 19100 | 27600 | 129000 | 288 | 100 | 43 | 19 | 16 | 8 | 54 1/2 | 16 | 4-10 | 4-15 | 4-15 | 4-15 | 4-15 | 2-6 | 10 | 2-2 | 4 |
| 585B | 20000 | 28500 | 136000 | 288 | 100 | 43 | 19 | 16 | 8 | 54 1/2 | 16 | 4-15 | 4-15 | 4-20 | 4-20 | 4-20 | 2-6 | 10 | 2-2 | 4 |
| 680B | 24700 | 33200 | 144000 | 288 | 108 | 43 | 19 | 16 | 8 | 54 1/2 | 16 | 4-15 | 4-20 | 4-20 | 4-20 | 4-20 | 2-6 | 10 | 2-2 | 4 |
| 755B | 30300 | 38800 | 147000 | 288 | 124 | 43 | 19 | 16 | 8 | 54 1/2 | 16 | 4-20 | 4-20 | 4-25 | 4-25 | 4-25 | 2-6 | 10 | 2-2 | 4 |
| 835B | 35200 | 43700 | 150000 | 288 | 140 | 43 | 19 | 16 | 8 | 54 1/2 | 16 | 4-20 | 4-25 | 4-25 | 4-25 | 4-25 | 2-6 | 10 | 2-2 | 4 |
| 875B | 29600 | 55000 | 204000 | 433 | 100 | 47 | 19 | 16 | 8 | 54 1/2 | 24 | 6-15 | 6-15 | 6-20 | 6-20 | 6-20 | 3-6 | 10 | 2-2 | 4 |
| 1020B | 37000 | 62400 | 216000 | 433 | 108 | 47 | 19 | 16 | 8 | 54 1/2 | 24 | 6-15 | 6-20 | 6-20 | 6-20 | 6-20 | 3-6 | 10 | 2-2 | 4 |
| 1130B | 45500 | 70900 | 220500 | 433 | 124 | 47 | 19 | 16 | 8 | 54 1/2 | 24 | 6-20 | 6-20 | 6-25 | 6-25 | 6-25 | 3-6 | 10 | 2-2 | 4 |
| 1250B | 52900 | 78300 | 225000 | 433 | 140 | 47 | 19 | 16 | 8 | 54 1/2 | 24 | 6-20 | 6-25 | 6-25 | 6-25 | 6-25 | 3-6 | 10 | 2-2 | 4 |
| 1165B | 40000 | 73800 | 272000 | 577 | 100 | 47 | 19 | 50 | 8 | 11 | 32 | 8-15 | 8-15 | 8-20 | 8-20 | 8-20 | 4-6 | 2-10 | 2-2 | 4 |
| 1360B | 49400 | 83200 | 288000 | 577 | 108 | 47 | 19 | 50 | 8 | 11 | 32 | 8-15 | 8-20 | 8-20 | 8-20 | 8-20 | 4-6 | 2-10 | 2-2 | 4 |
| 1505B | 60600 | 94400 | 294000 | 577 | 124 | 47 | 19 | 50 | 8 | 11 | 32 | 8-20 | 8-20 | 8-25 | 8-25 | 8-25 | 4-6 | 2-10 | 2-2 | 4 |
| 1665B | 70400 | 104200 | 300000 | 577 | 140 | 47 | 19 | 50 | 8 | 11 | 32 | 8-20 | 8-25 | 8-25 | 8-25 | 8-25 | 4-6 | 2-10 | 2-2 | 4 |

SPRAY PRESSURE
APPROX 5 PSIG
AT INLET HEADER ON ALL UNITS



No.25, 8th St, Ettehad Blvd, Damavand Rd, Tehran Iran
Tel : +9821 77343420 Fax: +9821 77353700
E-mail : info@viunahvac.com Web : www.viunahvac.com
Copyright © by Viuna HVAC Ind. Corporation 2011

Subject to change without notice. Printed in Iran
ALL RIGHTS RESERVED
VCT-OT-1 JULY 2011